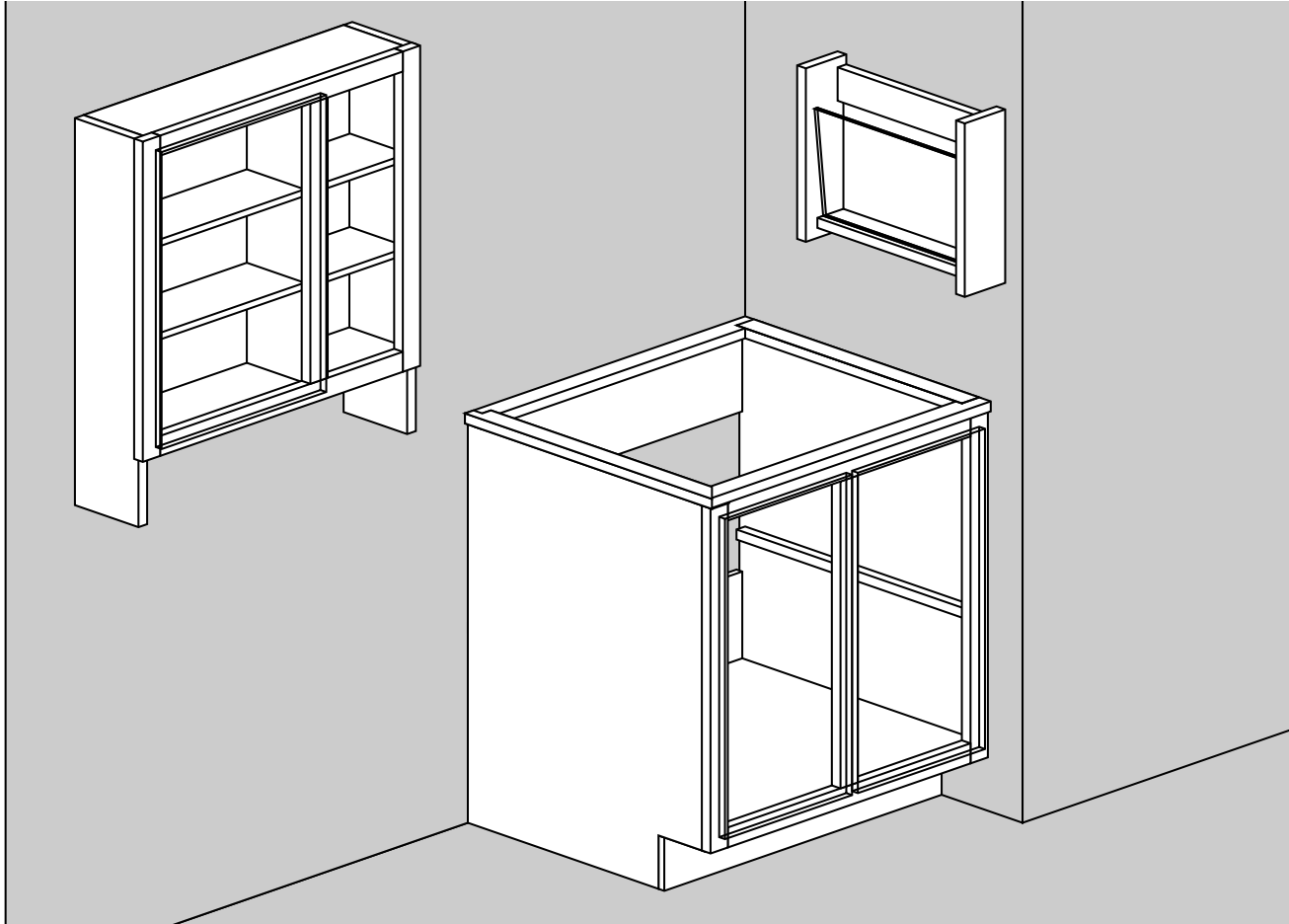


Basement Bath Cabinetry



Over-toilet cabinet is placed flush with left wall and soffit. Magazine rack is drawn on wall opposite actual location (for visibility). It is located on the left wall, low enough that the cabinet door clears it.

Basic Dimensions	(<i>w × h × d</i>)
Vanity	24" × 30" × 21"
Wall Cabinet	24" × 29" × 6"
Magazine Rack	14½" × 13" × 4½"

		Materials
1	4' × 8' ¾" plywood	sides, floor
1	4' × 4' ½" plywood	doors, shelves
1	2' × 2' ¼" plywood	cabinet back
scrap	9" × 14" ¼" plywood	magazine rack back
1	8¼" × 14" ¼" acrylic	magazine rack front
5	8' 1 × 2 pine	framing
1	8' 1 × 4 pine	magazine rack frame
2	8' 1 × 6 pine	framing
3	door handles	vanity & cabinet doors
6	cabinet hinges	vanity & cabinet doors
16	shelf pegs	wall cabinet shelves

Vanity Base Cut List

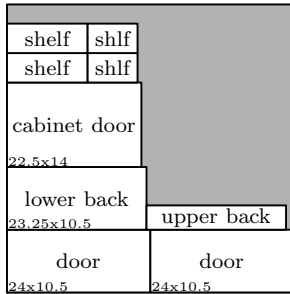
1	26"	1×4	pine	center vertical
2	26"	1×2	pine	front verticals
2	24"	1×2	pine	front horizontal
1	23 ³ / ₄ "	1×2	pine	top rear rail
1	24 ¹ / ₂ "	1×2	pine	top front rail
1	19 ¹ / ₂ "	1×2	pine	top right rail
1	21 ¹ / ₂ "	1×2	pine	top left rail
2	20 ¹ / ₂ "	3/4 × 3/4	pine	shelf rails
2	20 ¹ / ₂ " × 30 ¹ / ₂ "	3/4"	plywood	sides
1	24" × 4 ³ / ₄ "	3/4"	plywood	kick plate
1	23 ¹ / ₄ " × 20"	3/4"	plywood	floor
1	22 ¹ / ₂ " × 9 ¹ / ₂ "	3/4"	plywood	shelf
1	23 ¹ / ₄ " × 4"	1/2"	plywood	upper back
1	23 ¹ / ₄ " × 12"	1/2"	plywood	lower back
2	24" × 10 ¹ / ₂ "	1/2"	plywood	doors

Wall Cabinet Cut List

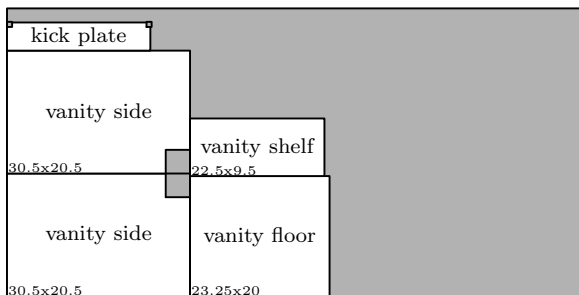
3	25"	1×2	pine	front verticals
2	24"	1×2	pine	front horizontal
2	29"	1×6	pine	sides
1	22 ¹ / ₄ "	1×6	pine	mid separator
2	23 ¹ / ₄ "	1×6	pine	top, bottom
1	23 ¹ / ₄ " × 24"	1/4"	plywood	back
1	22 ¹ / ₂ " × 14"	1/2"	plywood	door
2	13 ¹ / ₂ " × 5"	1/2"	plywood	shelves
2	8 ¹ / ₄ " × 5"	1/2"	plywood	shelves

Magazine Rack Cut List

2	13"	1×4	pine	sides
1	13 ¹ / ₄ "	1×3	pine	back rail
1	13 ¹ / ₄ "	1×3	pine	bottom
1	13 ¹ / ₄ " × 8 ¹ / ₄ "	1/4"	plywood	back
1	13 ¹ / ₄ " × 8 ¹ / ₄ "	1/4"	acrylic	front



1/2" plywood



3/4" plywood

Joinery

Vanity

doors Round over rear edges with 1/2" radius router bit. Decorate with 8 vertical grooves (1/8" × 1/16"), 4 each side on 1/4" centers, closest 2⁵/₈" from edge.

front frame Lap joints (1¹/₂" × 3/8") cut first.

After assembly, cut rabbets (3/4" × 1/4") for sides and floor.

top frame Left: 3/4" × 1/2" dado.

Back: 1/2" × 1/2" rabbet.

Right: 3/4" × 1/2" rabbet.

Front: none, sits atop frame.

Miter front left corner, other 3 rabbeted per isometric illustration.

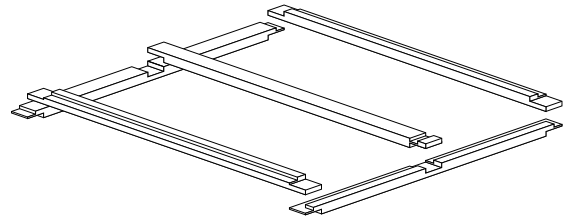
sides Notch (4" × 4") lower front corner.

Dadoes (3/4" × 3/8") for floor and shelf rails.

Rabbet (1/2" × 1/2") for back (fill center section with cut-off from 1/2" plywood).

kick plate Rabbet (3/4" × 3/8") on ends to fit sides.

Notch (3/4" × 3/4") top corners.



vanity front joinery (inside bottom view)

note: center vertical drawn as 1×2 should be 1×4

Wall Cabinet

sides Dado & Rabbet (3/4" × 3/8") for top/bottom. Rabbet (3/8" × 1/2") for back (stopped to keep bottom ends clean).

top, bottom Rabbet (3/4" × 3/8") for mid separator.

Rabbet (3/8" × 1/2") for back.

mid separator Rip 1/2" narrower to allow space for back.

Magazine Rack

sides Blind dado (3/4" × 3/8") for bottom rail.

Blind dado (1/4" × 3/8") for front.

Stopped rabbet (3/4" × 3/8") for back rail.

Stopped rabbet (1/4" × 3/8") for back.

bottom Dado, slightly angled (1/4" × 3/8") for front.

Notch (3/4" × 3/8") to fit side dadoes.

back rail Rabbet (1/4" × 3/8") for back.